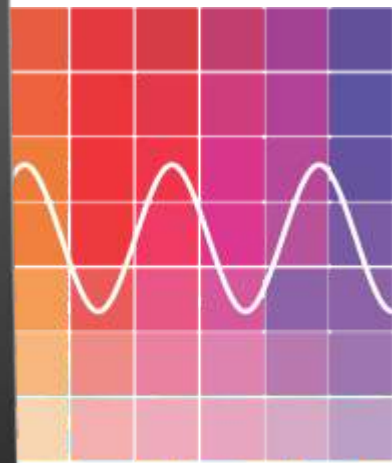
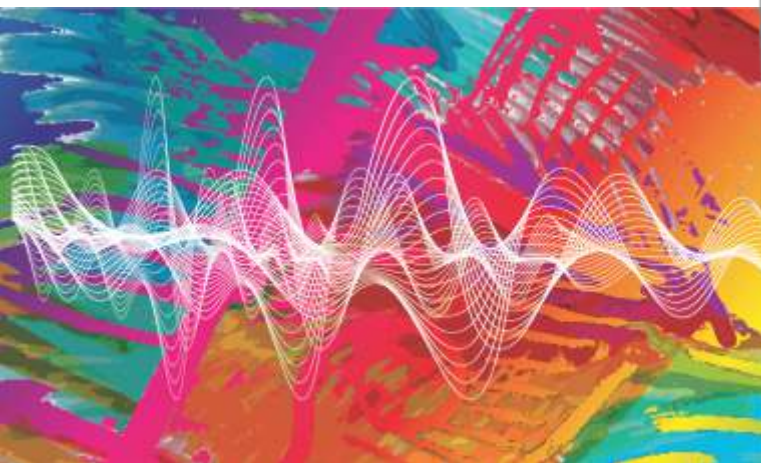


NUMERIC®

A Group brand |  legrand®



# Onfiniti

1 - 10 kVA UPS

Reliable and Efficient  
Single Phase UPS Solutions



# Onfiniti

## 1 Phase UPS

Today's business continuity demands a cost-effective power protection solution, for ensuring Power Continuity and Power Quality with optimal Total Cost of Ownership (TCO). The UPS range of Onfiniti is a true online double conversion topology UPS, designed with IGBT based rectifier & inverter to suit customer requirements.

Onfiniti provides maximum protection and power quality for entry level servers, workstations, communication equipments, ATMs etc...

### Product Snapshot

Power Rating	1 kVA - 10 kVA at 0.8 pf
Configuration	Tower
Voltage	220V/ 230V/ 240V
Input Power Factor	0.99



## INTERNAL ISOLATION TRANSFORMER



Isolation transformer is a standard option in all Onfiniti FMI series models. This considerably reduces the footprint and requirement of additional cabling and switchgear. Isolation transformer provides maximum protection to the connected loads.

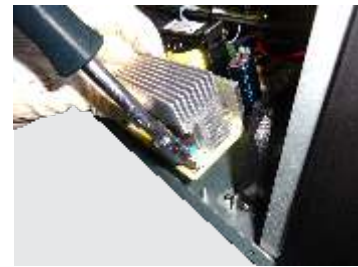
## Flexible battery configuration

Battery blocks and their capacity can be configured by the user, as per the required variable backup time, based on the load connected.



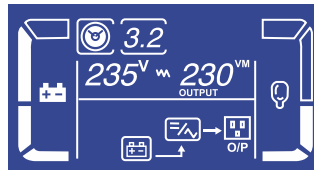
## Additional charger

The additional charger is a standard add-on option in Onfiniti UPS. It reduces the extra space/cabinet requirement. The additional charger is controlled by the UPS inverter controller and thus provides adequate protection from over voltage.



## Display panel

The display interface provides real-time status of critical diagnostics and essential parameters like load demands, input voltage, battery status, etc.



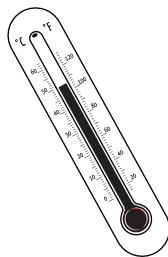
## Conformal coating

Onfiniti UPS PC Boards comes as a standard with conformal coating. Conformal coating provides protection to the electronic circuits from harsh environments that may contain moisture and or chemical contaminants.



## 50°C operation

Onfiniti UPS withstand high operating temperatures. They can operate at 40°C at 100% capacity and up to 50°C at 80% capacity.



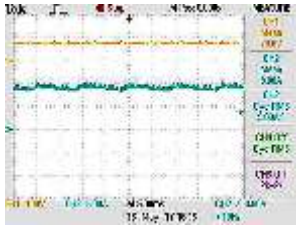
### Polarity protection for battery connection

Polarity protection ensures that the battery connections are managed and installation is made easy.



### Charger Ripple

The Onfiniti series is provided with adequate capacitor for minimum DC ripple < 5% of the battery carry, with this limit the battery life will be considerably increased



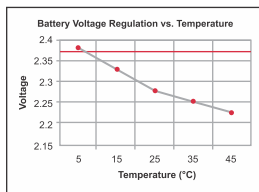
### Over-voltage cut-off device

Over-voltage cut-off device protects the UPS from high input voltage and increases the stability and performance of UPS.



### Temperature compensated battery charging

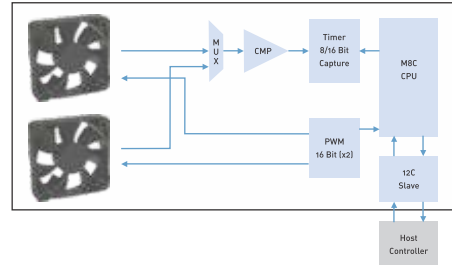
Onfiniti UPS automatically optimise the charging current, according to the operating temperature of the batteries. This feature extends the battery life considerably.



Temp. Compensated Charge Voltage  
Fixed Charge Voltage

### Intelligent fan operation

Intelligent fan operation manages and regulates fan speed, depending on the UPS requirements. It decreases power consumption and fan noise.



### Advanced communication

The SNMP option in Onfiniti provides comprehensive UPS management and flexible configuration via web browser, NMS, Java Applet, Telnet, SNMP or Hyper Terminal. This technology provides reliable automatic event notification via E-mail, SMS\*, WAP\* and SNMP Trap. The included View Power software provides automatic shutdown for multiple PCs over the network.



### Upgradable charger

The charger can be upgraded to extend the backup for over four hours.

### Output voltage selection

Onfiniti UPS offer option to choose the output voltage (200V\* / 208V\* / 220V / 230V / 240V).

\* with output de-rating

# SPECIFICATION

Parameters	1 kVA	2 kVA	3 kVA	5 kVA	6 kVA	7.5 kVA	10 kVA
<b>UPS details</b>							
<b>Topology</b>	True On-line Double Conversion UPS						
Output Power Capacity	800 W	1600 W	2400 W	4000 W	4800 W	6000 W	8000 W
<b>Specifications</b>							
<b>Input</b>							
Phase	Single Phase						
Voltage	230V AC						
Voltage Range	160V - 300V AC						
	110V - 300V AC @ 60% load			110V - 300V AC @ 50% load			
Power Factor	0.99						
Current THD	<10%						
<b>Battery</b>	36V	72V / 96V		192 - 240V			
Battery Charging	Constant Current & Constant Voltage with Optional Temperature Compensated Battery Charging						
<b>Output</b>							
Nominal Output Voltage	220VAC / 230VAC / 240VAC ± 1%						
Frequency	50Hz ± 0.1Hz						
Frequency Synchronisation	47.5 to 52.5Hz						
THDv	<3% Linear Load			<2% Linear Load			
	<5% Non Linear Load			<5% Non Linear Load			
<b>Efficiency</b>							
AC/AC ( overall efficiency )	Up to 90%			Up to 92%			
ECO Mode	Up to 97%						
Overload Capacity							
105 - 110%	10 min			3 min			
111 - 130%	1 min			30 sec			
<b>Communication</b>							
RS232	Available						
USB Com Port	Available						
Intelligent slot	Optional - SNMP / MODBUS / Dry Contacts						
Operating Temp	0~40°C Continuous						
<b>Electrical</b>							
Input Terminal Type	Terminal						
Output Terminal	4 x India type 6Amps (1KL)	6 x India type 6Amps(2KL) 6 x India type 6Amps +TB for 3kVA (3KL)		Input Breaker + Terminal			
Noise Level	< 50 dBA			< 58 dBA			
<b>Features</b>							
CONVERTER mode	Available						
Bypass Parameters Configurable	Available						
Display	LCD Display			LED + LCD Display			
<b>Mechanical</b>							
Ingress Protection (IP)	IP 20						
<b>Standards</b>							
EMC	EN 62040-2						
Safety	EN 62040-1						
Performance	IEC 62040-3						
Certification	CE						
Dimension for FM (W x D x H) in mm	145 x 405 x 235	190 x 435 x 335		260 x 482 x 488			
Dimension for FMI (W x D x H) in mm	190 x 465 x 465	190 x 435 x 595		260 x 482 x 871			
Weight in KG (FM / FMI)	6.2 / 21.3	11.5 / 35.5	12 / 43.5	18.9 / 51		22.8 / 63	

FM - Floor Mount UPS. FMI - Floor Mount UPS with Isolation transformer

Note : As Standard specification and design change from time to time, please ask for conformation of the information given in this publication

## Head Office

10<sup>th</sup> Floor, Prestige Center Court,  
Office Block, Vijaya Forum Mall, 183,  
N.S.K Salai, Vadapalani, Chennai,  
Tamilnadu - 600 026.  
Phone: +91 44 4656 5555

## Regional Offices

### New Delhi

A 25, 1<sup>st</sup> Floor, Mohan Co-Operative  
Industrial Estate, Mathura Road,  
New Delhi - 110 044.  
Phone : +91 11 26990028/29/30

### Kolkata

Bhakta Tower, Plot No. KB22,  
2<sup>nd</sup> & 3<sup>rd</sup> Floor, Salt Lake City, Sector - III,  
Kolkata - 700 098.  
Phone : +91 33 4021 3535/3536

### Mumbai

C/203, Corporate Avenue, Atul Projects,  
Near Mirador Hotel, Chakala, Andheri  
Ghatkopar Link Road, Andheri (East),  
Mumbai - 400 099.  
Phone : +91 22 3385 6201

### Chennai

10<sup>th</sup> Floor, Prestige Center Court, Office Block,  
Vijaya Forum Mall, 183, N.S.K Salai,  
Vadapalani, Chennai - 600 026.  
Phone : +91 44 3024 7236/200

### Coimbatore

No. B-15, Thirumalai Towers,  
No. 723, 4<sup>th</sup> Floor, Avinashi Road,  
Coimbatore - 641 018.  
Phone : +91 422 420 4018

### Hyderabad

No. 205-208, 2<sup>nd</sup> Floor, Block 2,  
White House Kundan Bag, Begumpet,  
Hyderabad - 500 016.  
Phone : +91 40 4567 1732

### Bengaluru

II Floor, AL-Latheef Building, 2/1, Union Street,  
Off: Infantry Road, Bengaluru - 560 001.  
Phone : +91 80 2286 1081/78

### Kochi

Door No. 50/1107A9, JB Manjooran Estate,  
3<sup>rd</sup> Floor, Bye Pass Junction,  
Edappally, Kochi - 682 024.  
Phone : +91 484 2801 921

## Branch Offices

### Chandigarh

SCO 4, First Floor,  
Sector 16, Panchkula,  
Chandigarh - 134 109.  
Phone : +91 93160 06215

### Dehradun

Plot No. 270, Ground Floor,  
Chaman Vihar,  
G.M.S. Road, Niranjanpur,  
Dehradun - 248 001.  
Phone : +91 135 272 9649

### Lucknow

209/B, 2<sup>nd</sup> Floor, Cyber Heights,  
Vibhuti Khand, Gomti Nagar,  
Lucknow - 226 018.  
Phone : +91 93352 01364

### Jaipur

Plot No. J-6, Scheme-12B,  
Sharma Colony, Bais Godown,  
Jaipur - 302 019.  
Phone : +91 141 221 9082

### Guwahati

House No 02,  
Rajgarh Girls High School Road  
(Behind Rajgarh Girls High School) ,  
Guwahati - 781 007.  
Phone : +91 361 245 0322/245 1987

### Patna

204, Fraser Road,  
Hemplaza, 2<sup>nd</sup> Floor,  
Patna - 800 001.  
Phone : +91 612 220 0657

### Ranchi

202 & 203,  
Bardwan Compound,  
Lalpur, 2<sup>nd</sup> Floor,  
Ranchi - 834 001.  
Phone : +91 651 221 4071

### Bhubaneswar

N-2/72 Ground Floor,  
IRC Village, Nayapally,  
Bhubaneswar - 751 015.  
Phone: +91 674 255 0760

### Bhopal

Plot No. 160,  
Devashish Complex,  
2<sup>nd</sup> Floor, Zone-I, MP Nagar,  
Bhopal - 462 011.  
Phone : +91 755 276 4202

### Nagpur

Plot No.173, Ground Floor,  
Utkarsh Ashwini Appts,  
RPTS Road, Laxmi Nagar,  
Nagpur - 440 022.  
Phone : +91 712 228 6991/228 9668

### Ahmedabad

A-101/102, Mondeal Heights,  
Beside Hotel Novotel,  
Near Iscon Circle,  
S G Highway,  
Ahmedabad - 380 015.  
Phone : +91 79 6134 0555

### Pune

302, 3<sup>rd</sup> Floor,  
Swastik Chambers,  
Above ICICI Bank,  
Off Karve Road, Erandwane,  
Pune - 411 004.  
Phone : +91 84 5201 4036

### Madurai

Door. No.1,  
Pillayar Koil Street,  
S.S.Colony,  
Madurai - 625 016.  
Phone : +91 452 260 4555

# NUMERIC<sup>®</sup>

A Group brand |  **legrand<sup>®</sup>**

Sales - enquiry.numeric@numericups.com

Service - support.numeric@numericups.com

TOLL FREE NO : 1800 425 3266

www.numericups.com